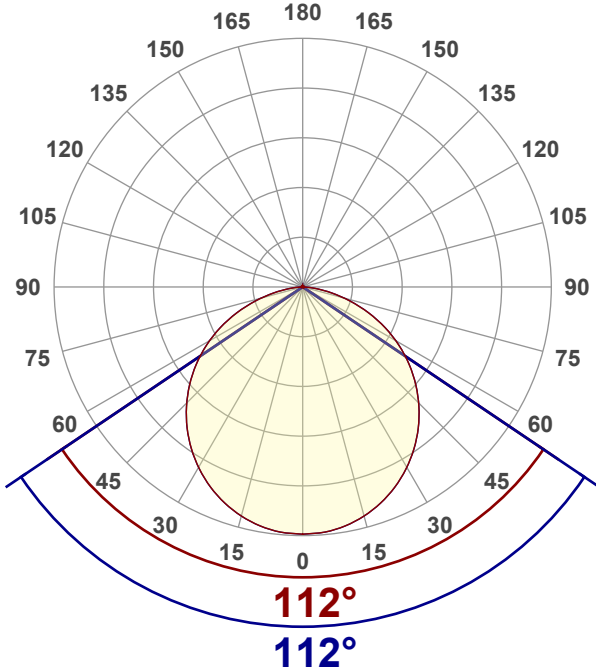


Light efficiency:**108 Lumen/Watt****Color temperature:****4090 K****Light quality:****CRI:96.5, R_g:91.6, R_f:100.4****P: 2 / V: - / F: 2****Output: 1039 lm****Peak: 369 cd****Power: 9.6 W****Voltage: 121 V****Current: 0.086 A****PF: 0.93****THD: 39.02 %****Angular Distribution****0° and 90° plane****Product name:****SLMT4-10W - 4000K****Test Date:****11/27/2025****Beam Angle (50% of the brightness of the centre):****112°****Field Angle (10% of the brightness of the centre):****159.6°****Cut Off Angle (2.5% of the brightness of the centre):****173.1°****Beam Details*****measured at centre of beam**

Mounting Height (feet)\(meter)	Lux*	Footcandles*	Beam width (feet) / (meter)
4 ft / 1.2 m	248 lx	23 fc	11.9 ft / 3.6 m
8 ft / 2.4 m	62 lx	6 fc	23.7 ft / 7.2 m
12 ft / 3.7 m	28 lx	3 fc	35.6 ft / 10.8 m
16 ft / 4.9 m	15 lx	1 fc	47.4 ft / 14.5 m
20 ft / 6.1 m	10 lx	1 fc	59.3 ft / 18.1 m

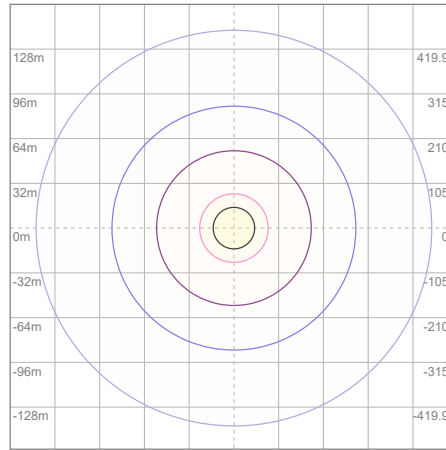
Beam center

Photometric Testing Report

Zonal Lumen Summary

Zone	Lumen	%Luminaire
0-30	285	27.43%
0-40	467	44.95%
0-60	826	79.50%
60-90	212	20.40%
70-100	84.9	8.17%
90-120	0.626	0.06%
0-90	1038	99.90%
90-180	1.11	0.11%
0-180	1039	100.00%

ISO Lux Diagram



Lux at center:	40 lx
3%	1.20 lx
5%	2.00 lx
10%	4.00 lx
30%	12.00 lx
50%	20.00 lx

Conditions:

Number of planes: 8
Lux distribution on a surface when lamp is mounted at 3.05 meters from the surface.

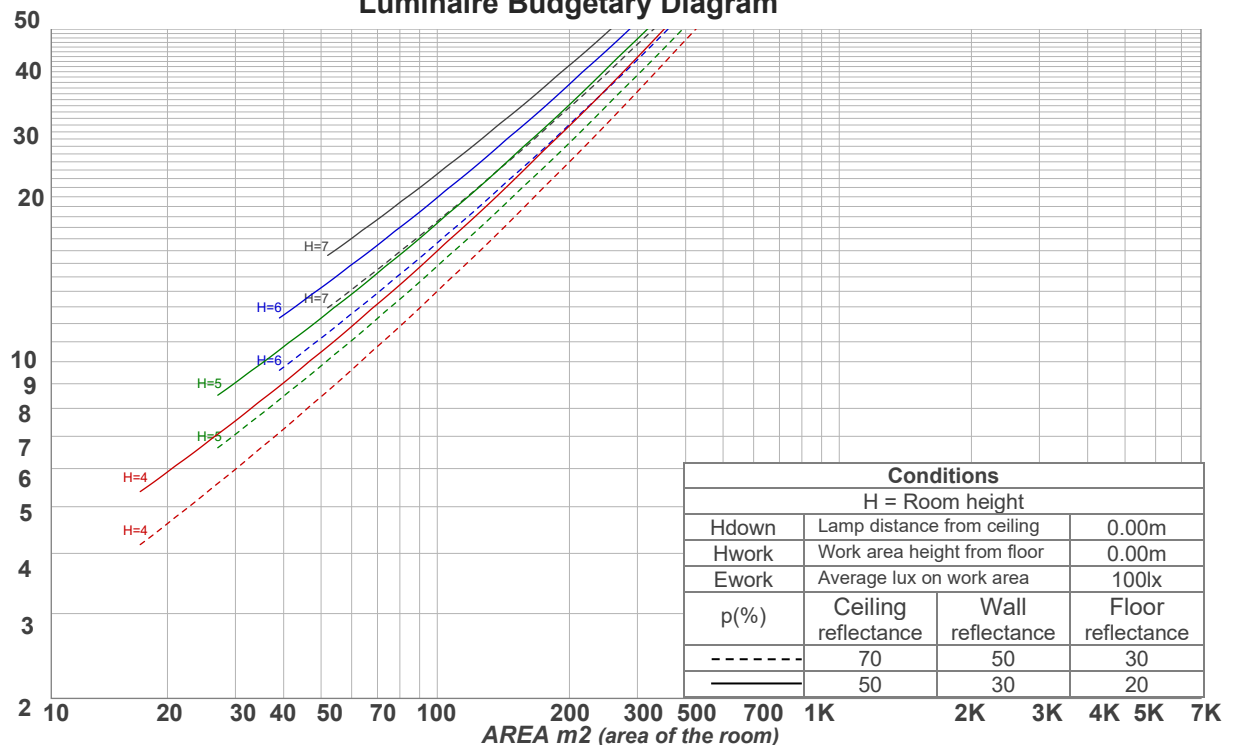
Mounting height: 3.05 meters (10 feet)

Coefficients of Utilization

Ceiling reflectance	80				70				50			30			10			0
Wall reflectance	70	50	30	10	70	50	30	10	50	30	10	50	30	10	50	30	10	0
Floor reflectance	20	20	20	20	20	20	20	20	20	20	20	20	20	20	20	20	20	0
RCR	(RCR: Room Cavity Ratio)				Room Values are expressed as percentage of Lumens delivered to the task surface													
0	119	119	119	119	116	116	116	116	111	111	111	106	106	106	102	102	102	100
1	109	104	100	96	106	102	98	95	98	94	92	94	91	89	90	88	86	84
2	99	91	84	78	96	89	83	77	85	80	76	82	78	74	79	75	72	70
3	90	80	72	65	88	78	71	64	75	69	63	72	67	62	70	65	61	59
4	83	71	62	55	80	69	61	55	67	60	54	64	58	53	62	57	52	50
5	76	63	54	47	74	62	53	47	60	52	47	58	51	46	56	50	46	43
6	70	57	48	41	68	56	47	41	54	46	41	52	46	40	51	45	40	38
7	65	51	43	36	63	51	42	36	49	42	36	48	41	36	46	40	35	34
8	60	47	38	33	59	46	38	32	45	37	32	44	37	32	42	36	32	30
9	56	43	35	29	55	42	35	29	41	34	29	40	34	29	39	33	29	27
10	53	40	32	26	52	39	32	26	38	31	26	37	31	26	36	30	26	24

LAMPS (number of lamps)

Luminaire Budgetary Diagram



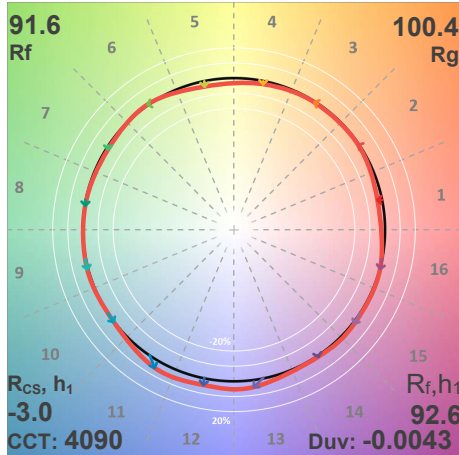
Conditions

H = Room height

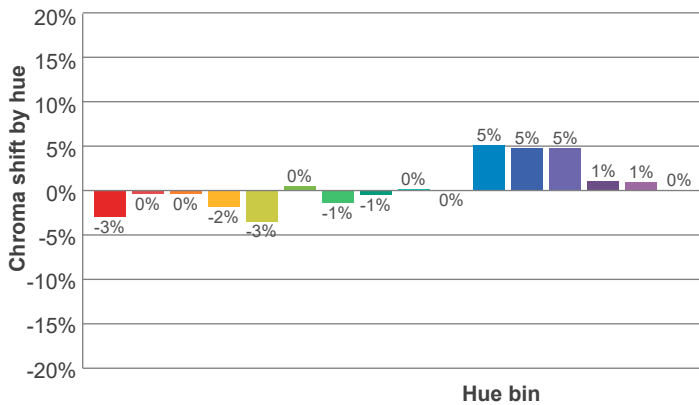
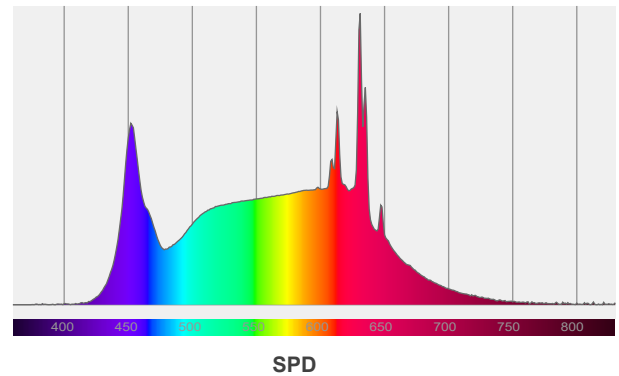
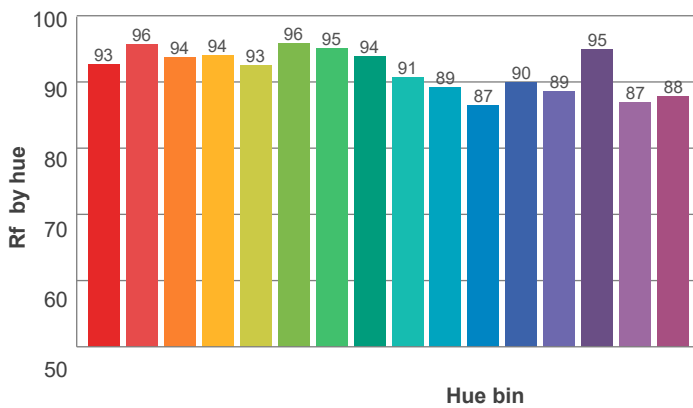
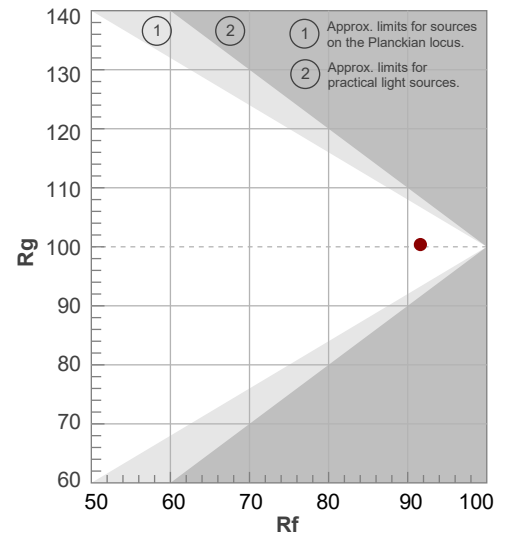
Hdown	Lamp distance from ceiling		0.00m
Hwork	Work area height from floor		0.00m
Ework	Average lux on work area		100lx
p(%)	Ceiling reflectance	Wall reflectance	Floor reflectance
-----	70	50	30
=====	50	30	20

ANSI/IES TM-30-18

P: 2 / V: - / F: 2



Hue Bin	R _f	Shifts (%)	
		Chroma	Hue
1	93	-3%	1%
2	96	0%	1%
3	94	0%	2%
4	94	-2%	0%
5	93	-3%	0%
6	96	0%	1%
7	95	-1%	2%
8	94	-1%	4%
9	91	0%	7%
10	89	0%	7%
11	87	5%	7%
12	90	5%	0%
13	89	5%	-7%
14	95	1%	0%
15	87	1%	-8%
16	88	0%	-7%



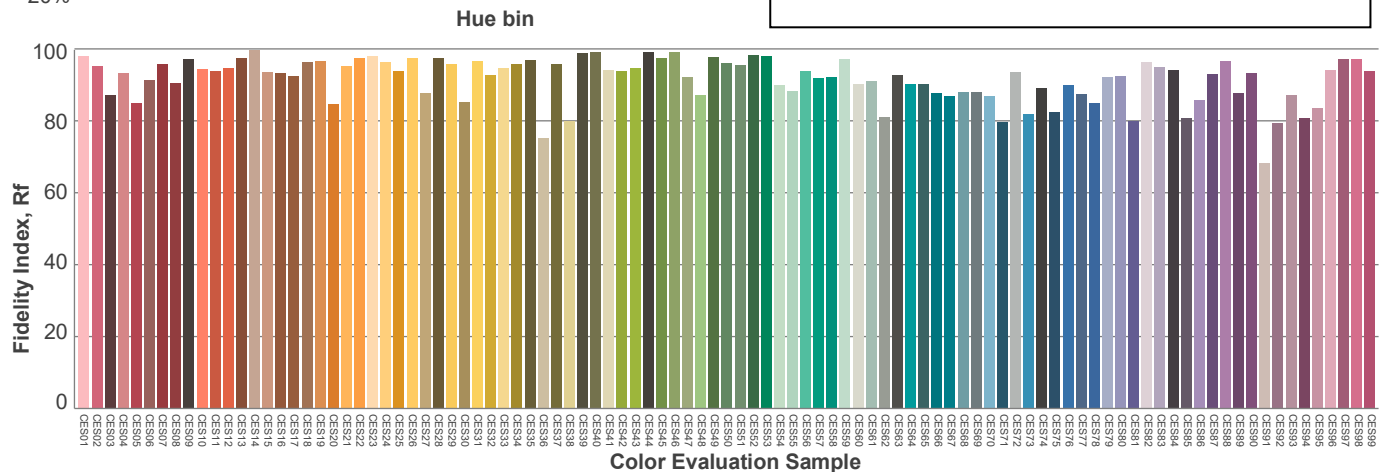
Red: 24.5%, Power=3.8mW

Blue: 16.7%, Power=10.3mW

Green: 29.8%, Power=13.7mW

UVA: 0%, Power=0.0mW

Dominant Wavelength: 584nm

1st Peak Wavelength: 631nm2nd Peak Wavelength: 613nm

Glare Evaluation According to UGR

p Ceiling		70	70	50	50	30	70	70	50	50	30
p Walls		50	30	50	30	30	50	30	50	30	30
p Floor		20	20	20	20	20	20	20	20	20	20
Room size X Y		Viewing direction at right angles to lamp axis					Viewing direction parallel to lamp axis				
2H	2H	28.1	29.3	28.4	29.7	29.9	28.1	29.3	28.4	29.7	29.9
	3H	29.5	30.8	29.9	31.1	31.3	29.5	30.8	29.9	31.1	31.3
	4H	30.1	31.3	30.5	31.6	31.8	30.1	31.3	30.5	31.6	31.8
	6H	30.5	31.6	30.8	31.9	32.2	30.5	31.6	30.8	31.9	32.2
	8H	30.6	31.6	31.0	31.9	32.4	30.6	31.6	31.0	31.9	32.4
	12H	30.7	31.6	31.0	32.0	32.4	30.7	31.6	31.0	32.0	32.4
4H	2H	28.7	29.9	29.1	30.2	30.5	28.7	29.9	29.1	30.2	30.5
	3H	30.4	31.4	30.8	31.8	32.2	30.4	31.4	30.8	31.8	32.2
	4H	31.0	31.9	31.5	32.3	32.9	31.0	31.9	31.5	32.3	32.9
	6H	31.5	32.4	32.0	32.7	33.1	31.5	32.4	32.0	32.7	33.1
	8H	31.6	32.4	32.1	32.8	33.2	31.6	32.4	32.1	32.8	33.2
	12H	31.7	32.4	32.2	32.8	33.3	31.7	32.4	32.2	32.8	33.3
8H	4H	31.3	32.1	31.8	32.4	32.8	31.3	32.1	31.8	32.4	32.8
	6H	31.9	32.5	32.4	33.0	33.5	31.9	32.5	32.4	33.0	33.5
	8H	32.1	32.6	32.6	33.2	33.8	32.1	32.6	32.6	33.2	33.8
	12H	32.3	32.7	32.8	33.2	33.8	32.3	32.7	32.8	33.2	33.8
12H	4H	31.3	31.9	31.8	32.4	32.8	31.3	31.9	31.8	32.4	32.8
	6H	31.9	32.5	32.5	33.0	33.6	31.9	32.5	32.5	33.0	33.6
	8H	32.2	32.6	32.8	33.1	33.8	32.2	32.6	32.8	33.1	33.8
Variation of the observer position for the luminaire distance S											
S = 1.0H		0.1 / -0.1					0.1 / -0.1				
S = 1.5H		0.2 / -0.3					0.2 / -0.3				
S = 2.0H		0.5 / -0.5					0.5 / -0.5				
Standard table		n/a					n/a				
Correction summand		n/a					n/a				
Corrected glare indices referring to 1039 lm total luminous flux											